

FORD **FOCUS**



Go Further



Visionary. Ingenious. Remarkable.
Every car bears his signature.

Henry Ford



Unlock extra content online. Use an appropriate app on your smartphone or tablet to scan the QR codes in this brochure.



Image shows Titanium 5-door in Candy Red, with 17" alloy wheels bodystyling kit and large spoiler.

New Ford Focus Zetec-S in Candy Red with 17" 5X2 Spoke Alloy Wheels, Bi-Xenon Headlamps, Active Park assist and Privacy Glass.

Please note that red brake calipers are not available on production model Zetec-S. Image for illustrative purposes only. Please see ford.ie for full details on this model.

360°





Image shows Titanium 5-door in Deep Impact Blue, with 18" alloy wheels and small spoiler.

The world's best-selling car just got even better.

The new Focus has a sleek exterior, an elegant new grille, and new state-of-the-art headlights and rear lights. Sit inside and you'll appreciate the enhanced instrument panel and a new-design steering wheel. But it is the new technology – such as a parking system that gets you in and out of tight spaces – that ensures the most technologically advanced car in its class stays that way.

Control Blade independent rear suspension

The Ford Focus offers you an addictive driving experience. A key element is the Control Blade independent rear suspension that absorbs both horizontal and vertical rear-wheel movement and provides passive rear wheel steering for increased cornering stability.



Image shows Titanium wagon in Tectonic Silver, with 18" alloy wheels and small spoiler.

EcoBoost. The story of LESS FUEL

MORE POWER.

With its turbocharger, direct injection and diamond-like coating on the piston rings, the **Ford EcoBoost** engine produces the same performance as a larger engine, but with superior fuel economy and lower emissions. The new Ford Focus gives you a choice of three EcoBoost engine sizes:

- The 1.0-litre EcoBoost – three times winner of International Engine of the Year.
- The 1.5-litre EcoBoost – all the power and performance of the 1.6-litre EcoBoost it replaces, but with even fewer emissions and better fuel economy.
- The 2.0-litre EcoBoost – ultimate power, available in the exciting Focus ST.

Please see our separate ST Range brochure for more details.



Powered by **FORD EcoBoost**

ECONetic and Electric. Engineered for economy.

The new Focus ECONetic combines low running costs with the great driving dynamics that Focus is famous for. Offering outstanding economy, the ECONetic TDCi diesel engine will be available from Spring 2015.

The Ford Focus Electric provides exceptional levels of power and efficiency. Delivering a smooth and whisper quiet performance, the 100% electric vehicle produces zero CO₂ emissions with all the driving pleasure you expect from a Focus. Please see our separate Focus Electric brochure for more details. Available from mid-2015.





sensors can warn you of
a potential collision
and automatically
apply the brakes.



Active Braking uses sensors to monitor the road ahead. When it detects a possible collision at high speed it sends you a warning message on the instrument panel. If you don't react, the system applies the brakes automatically. At lower speeds, when stopping distances are typically shorter, **Active City Stop** is used to monitor the road ahead. If the system detects a potential collision the brakes are applied automatically to help avoid or minimise an impact.

“Read text message”

“Call Chris”

“Find a car park”

“Shuffle”



“Play Rihanna”

“Reply to text message”

“Destination address”

“Climate temperature 22”

Use your voice
like another
pair of hands.

Ford SYNC 2 with Voice Control and Touchscreen lets you select music, control navigation, adjust climate control, make and receive hands-free calls and choose contacts from your phone list with remarkably simple voice commands. It will even read out your incoming text messages. You can also do all that through the 8" high-resolution colour touchscreen.

*Built-in navigation system is a factory-fitted option.





Active Park Assist helps you find a space.

Active Park Assist can steer you into parallel or perpendicular parking spaces just 20% longer or wider than the car. Simply push a button and the sensors of this innovative system locate a suitable space as you drive past. Then it automatically steers you in, while all you do is operate the accelerator, brake and gears (following on-screen instructions and audible signals).



And get in. And get out.

Park-Out Assist works like Active Park Assist in reverse, helping you manoeuvre out of a parallel space. The system steers while you keep control of the accelerator, brake and gears. When the system has cleared the space, it gives you a 'Take control of steering' message through the cluster.



Find extra
pleasure in the
small details.



◀ Driver Alert

Designed to inform you if the system detects driving behaviour that indicates a drop in alertness levels. Initially, a warning icon is displayed in the instrument cluster, asking you to take a rest. If driving alertness further declines, the message is repeated and combined with a chime.



◀ Rear-view camera

Select reverse gear and the rear-view camera comes on automatically in the navigation display, allowing you to see objects behind your car. Special guidance graphics indicate the width and centre line of the car, based on the steering angle, for safer and easier manoeuvring.



Lane Keeping Alert and Lane Keeping Aid ▶

There are two key features of the Ford Lane-Keeping System. **Lane-Keeping Alert** is designed to help the driver keep the vehicle within its driven lane. Steering wheel feedback alerts you if an unintended lane departure is likely to happen. **Lane-Keeping Aid** applies a steering torque back towards that lane, in the event of an unintended lane departure. Lane-Keeping System is available at speeds over 65 km/h on highways and interurban roads with visible markings, and can be overridden by the driver or the turn indicator at any time.



▶ MyKey®

This innovative feature lets you tailor and limit car settings – like top speed and audio volume – to suit individual users.



▲ Heated steering wheel

Keeps your hands warm and flexible on even the coldest of days.

LED daytime running lights

Offers increased visibility to other road users. They are also more energy efficient than dipped headlights due to the latest LED technology.



▲ Adaptive Cruise Control

Combines cruise control and distance control. Simply enter the desired speed and distance from the vehicle in front, and Adaptive Cruise Control will automatically maintain the set distance if traffic conditions do not allow travel at the desired cruising speed.



◀ Traffic Sign Recognition

Designed to automatically read standard format road-speed signs and display the last posted speed limit in the driver's instrument cluster. Also available with optional Satellite Navigation for enhanced traffic sign recognition. (See page 45 for details).



◀ Paddle gearshift

Available on all automatics, a paddle fitted to each side of the steering column allows you to select gears with a flick of your fingers.





Pure exhilaration!

The thrilling Ford Focus ST gives you an addictive driving experience. Choose from two powerful engines: the 250 PS 2.0-litre EcoBoost or the 185 PS 2.0-litre Duratorq TDCi. The ST's unique styling includes 18" ST wheels, a full body kit and Recaro sports front seats.

Image shows optional 19" alloy wheels. Please see our separate ST Range brochure for more details.

250 PS. 345 Nm

0-100km/h 6.5s

ST



Focus bodystyles.

4-DOOR

Model shown is a Focus Titanium in Magnetic metallic paint (option) with 18" 8-spoke alloy wheels and additional extra equipment (option).



5-DOOR

Model shown is a Focus Titanium in Deep Impact Blue metallic paint (option) with 18" 5x2-spoke alloy wheels and additional extra equipment (option).



Estate

Model shown is a Focus Titanium in Tectonic Silver metallic paint (option) with 18" 8-spoke alloy wheels and additional extra equipment (option).

Focus series



Style

Standard exterior features

- 16" 5x2-spoke alloy wheels
- Body colour door handles
- Body colour rear spoiler (5-door)
- Electrically-operated door mirrors with body colour housings
- Electronic Stability Control (ESC) with Traction Control and Emergency Brake Assist (EBA)
- Ford Easy-Fuel capless refuelling
- Ford Intelligent Protection System (IPS)
- Hill Start Assist
- Remote control central locking
- Tyre Pressure Monitoring System

Bodystyles: 4-door, 5-door and wagon

Engines

Petrol: 1.0 EcoBoost 100 PS (74 kW), 1.5 EcoBoost 150PS (110kW) (not available at launch)
Diesel: 1.6 Duratorq TDCi 95 PS (70 kW), 2.0 Duratorq TDCi 150 PS (110 kW)

Zetec

Additional to Style

- 16" 5x2-spoke alloy wheels
- Chrome window trim and finish on upper door line
- Sports-tuned suspension
- Black headlight bezel
- Front fog lights

Bodystyles: 4-door and 5-door

Engines

Petrol: 1.0 EcoBoost 100 PS (74 kW), 1.5 EcoBoost 150PS (110kW) - not available at launch
Diesel: 1.6 Duratorq TDCi 95 PS (70 kW), 2.0 Duratorq TDCi 150 PS (110 kW)

Titanium

Additional to Zetec

- 16" 10-spoke alloy wheels
- Chrome finish on upper grille
- Front fog lights with chrome applique
- Silver headlight bezel

Bodystyles: 4-door, 5-door and wagon

Engines

Petrol: 1.0 EcoBoost 125 PS (92 kW), 1.5 EcoBoost 150 PS (110 kW)- not availalbe at launch
Diesel: 1.6 Duratorq TDCi 95/115 PS (70/85 kW), 2.0 Duratorq TDCi 150 PS (110 kW)



Style

Standard interior features

- Stereo radio/CD with 4.2" colour display, Ford SYNC 1 with AppLink, six speakers and USB connectivity
- Manual air conditioning
- Leather-trimmed 3-spoke steering wheel
- Comfort style front seats
- Bright finish inner door levers
- Leather-trimmed gearshift knob
- Driver and passenger seat back map pocket

*A rear-facing child seat should never be placed in the front passenger seat when the Ford vehicle is equipped with an operational front passenger's airbag. The safest place for children is properly restrained on the rear seat.

*Front passenger's airbag deactivation is available as a Dealer fitted option.



Zetec

Additional to Style

- Mid centre console with driver's armrest, open stowage, CD storage, and 12-volt powerpoint
- Sports-style front seats



Titanium

Additional to Zetec

- Driver's seat with adjustable lumbar support
- Premium centre console with armrest, stowage compartments, 12-volt front and rear power sockets, and leather-trimmed handbrake
- Dual-zone Electronic Automatic Temperature Control (DEATC) air conditioning
- Heated windscreen
- Front and rear floor mats
- LED courtesy lights with theatre-style dimming
- Aluminium-finish scuff plates with 'Ford' logo
- Ambient LED courtesy lighting (single colour)
- Cruise control with Speed Limiter
- Electrically-operated front and rear windows with global closing
- Rear seat folding centre armrest



360°



Frozen White
Solid body colour*



Shadow Black
Mica body colour*



Moondust Silver
Metallic body colour*



Magnetic
Metallic body colour*



Brisbane Brown
Fashion Metallic body colour*



Tectonic Silver
Fashion Metallic body colour*



Iceberg Blue
Fashion Metallic body colour*



Race Red
Solid body colour



Blazer Blue
Solid body colour



Candy Red
Special metallic body colour*



Caribou
Fashion Metallic body colour*



Deep Impact Blue
Metallic body colour*

We chose Deep Impact Blue. What will you choose?

The Focus owes its beautiful and durable exterior to a special multi-stage painting process. From the wax-injected steel body sections to the protective top coat, new materials and application processes ensure your Focus will retain its good looks for many years to come.



*Frozen White and metallic body colours are options at extra cost.

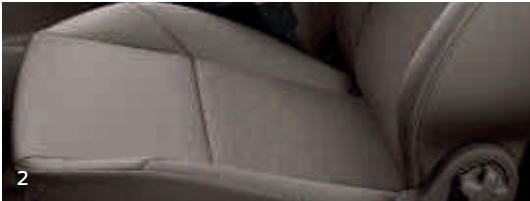
The Ford Focus is covered by the Ford Perforation Warranty for 12 years from the date of first registration. Subject to terms and conditions.

Note The car images used are to illustrate body colours only and may not reflect current specification or product availability in certain markets. Colours and trims reproduced within this brochure may vary from the actual colours, due to the limitations of printing processes used.

A feel for comfort.

The look and feel of interior materials plays a large part in appreciating the overall driving experience. That's why great care has been taken in designing and crafting the trims for the new Focus.

Shown on full seat: Basket Weave/Capretto in Charcoal Black* for Titanium.



- 1. Twist in Dark Charcoal Black for Style
- 2. Not Marketed in Ireland
- 3. View in Charcoal Black for Zetec
- 4. View in Charcoal Black (with red stitching) for Zetec-S only
- 5. Groove/Lux in Charcoal Black for Titanium
- 6. Capretto/Groove (partial leather) in Charcoal Black* for Zetec/Titanium
- 7. Basket Weave/Capretto (full leather) in Charcoal Black* for Titanium

*Option at extra cost.





Wheels



- 17" 5x2-spoke alloy wheel.
(Option and accessory)
- 17" 10x2-spoke alloy wheel.
(Standard, option and accessory)
- 17" 15-spoke alloy wheel. (Standard,
option and accessory)
- 18" 5x2-spoke alloy wheel. (Option
and accessory)
- 18" 8-spoke Sterling Silver-finish
alloy wheel. (Option and accessory)

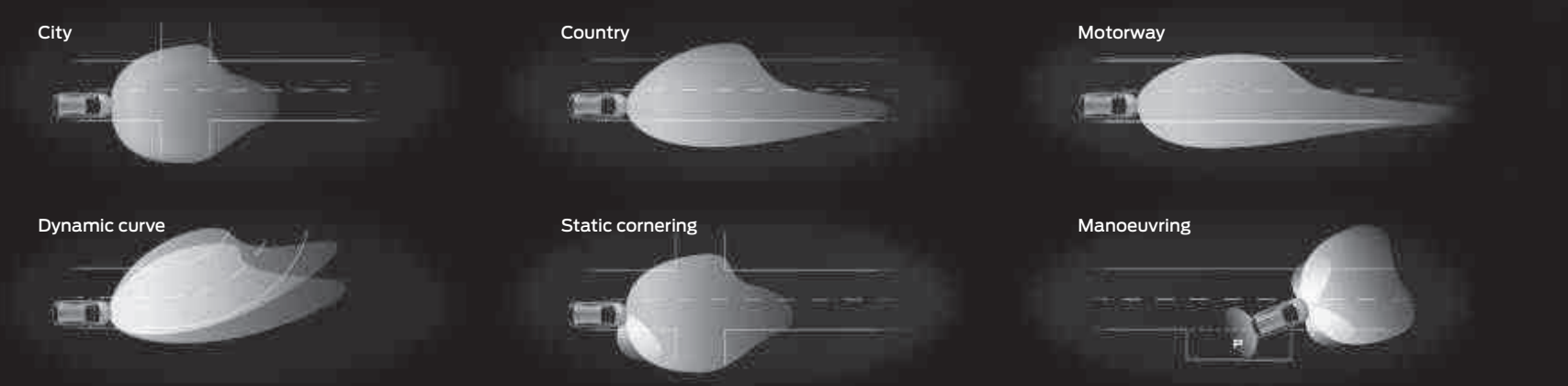
	Focus Style	Focus Zetec	Focus Titanium
Wheels			
Alloy – 16"x7", 5x2-spoke Zetec	-	●	-
Alloy – 16"x7", 10 spoke	-	-	●
Alloy – 16"x7", 5x2-spoke Style	●	-	-
Alloy – 17"x7", Multi-spoke	-	-	○
Alloy – 17"x7", Y-spoke	-	○	-
Alloy – 17"x7", 5x2-spoke, Ford Individual Design	○	○	○
Alloy – 18"x8", 5x2-spoke, Sport Design	-	○	-
Alloy – 18"x8", 8-spoke, Ford Individual, Sterling-Silver-finish (Fitted with 235/40 tyres)* (not available with 1.0 EcoBoost (100 PS)	-	○	○
Alloy – 18"x8", Special Design	-	-	○
Spare – Mini steel	●	●	●
Spare – Full-size steel	○	○	○
Locking wheel nuts (only with alloy wheels)	●	●	●

● = Standard, ○ = Optional, at extra cost, □ = Part of an option pack at extra cost. *The wheel you choose will be fitted with the tyre size noted, but no choice of tyre brand is available. **Ford Emergency Assistance operates in over 30 European countries. This feature works when paired with a compatible connected mobile phone that is with you when an airbag is deployed (excludes knee airbags) or a sensor that registers a crash and deactivates the fuel pump. Text function and Emergency Assistance not supported by all European languages. Compatible mobile phone required. See your local Ford website for latest information. Note: the 18" wheels and tyres available on Ford Focus are designed to deliver more sporting driving characteristics and a firmer ride quality compared to standard 16 and 17" wheels. All 18" wheels require steering rack limiter (plant and dealer fit).



Obsessively driven

During its development, we test drove the Ford Focus the equivalent of 87 times around the globe. It's a car you can rely on, right down to the smallest ball bearing.



To help you see more and be more visible to other drivers, the Ford Focus combines adaptive bi-xenon lights, which are more than twice as powerful as conventional lights, with the latest camera technology and LED daytime running lights.

Auto High Beam

When oncoming traffic is detected, the headlights dip automatically, then revert to high beam when the vehicle has passed.

Static cornering headlight

To help you see further, the lights illuminate the inside of a corner when you turn the steering wheel beyond 30 degrees into the direction of turn.

Optimal light patterns

Sensors detect your driving conditions and automatically adapt the light beam pattern to offer maximum illumination.

*Auto High Beam only available in conjunction with Lane-Keeping Aid (part of the Lane-Keeping System).

Exterior features

	Focus Style	Focus Zetec	Focus Titanium
Exterior design features			
Bright-finish on upper door line	-	●	●
Door mirrors – Body colour housing, electrically-operated, integrated side indicator	-	-	-
Door mirrors – Body colour housing, heated, electrically-operated, integrated side indicator	●	●	●
Door mirrors – Body colour housing, heated, electrically-operated, power-foldable, integrated side indicator, approach lights	○/□	○/□	○/□
Door mirrors – Blind Spot Information System with Cross Traffic Alert (includes power-foldable door mirrors with approach lights)	○/□	○/□	○/□
Front lower grille – Self colour	●	●	●
Front upper grille – Self colour with chrome surround	●	●	-
Front upper grille – Self colour with chrome surround and finish bar	-	-	●
Front fog lights	○/□	●	●
Rear privacy glass	○/□	○/□	○/□
Rear spoiler – Body colour (5-door only)	●	●	●
Rear spoiler – Body colour, large (5-door and Estate only)	○/□	○/□	○/□
Side skirts – Self colour	●	●	●
Side skirts – Body colour	□	□	□
Roof rails – Black-finish (Estate only)	○	○	-
Roof rails – Silver-finish (Estate only)	○	○	○
Crossbars for roof rails – Aluminium (Estate only)	○	○	○
Detachable tow bar (includes 13-pin electrical kit, Permanent Power Supply, Trailer Sway Control, Hill Start Assist) (not available on Estate with Ford Individual bodystyling kit)	○	○	○
Tow bar electrical pre-equipment kit (includes Trailer Sway Control, Hill Start Assist) (not available with Ford Individual bodystyling kit)	○	○	○

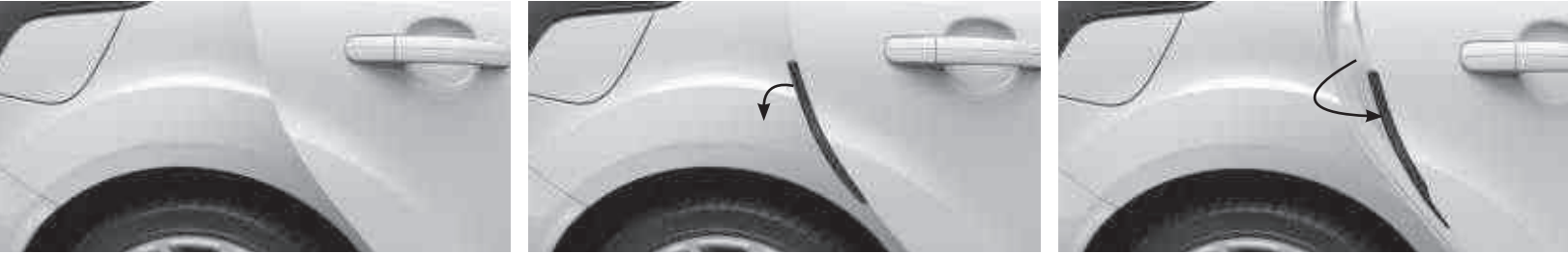
● = Standard, ○ = Optional, at extra cost, □ = Part of an option pack at extra cost. *The wheel you choose will be fitted with the tyre size noted, but no choice of tyre brand is available. **Ford Emergency Assistance operates in over 30 European countries. This feature works when paired with a compatible connected mobile phone that is with you when an airbag is deployed (excludes knee airbags) or a sensor that registers a crash and deactivates the fuel pump. Text function and Emergency Assistance not supported by all European languages. Compatible mobile phone required. See your local Ford website for latest information. Note: the 18" wheels and tyres available on Ford Focus are designed to deliver more sporting driving characteristics and a firmer ride quality compared to standard 16 and 17" wheels. All 18" wheels require steering rack limiter (plant and dealer fit).

Exterior features

	Focus Style	Focus Zetec	Focus Titanium
Exterior convenience features			
Door edge protectors – Front and rear	○	○	○
Active Park Assist – including perpendicular park assist and park-out assist	○/□	○/□	○/□
Ford Easy-Fuel capless refuelling system	●	●	●
Headlights – Dedicated LED day running (includes LED rear lights on 5-door and Estate)	○	○	○
Headlights – Automatic on/off (includes automatic wipers with rain sensor, headlight courtesy delay and, if not already specified, front fog lights)	○	○	○
Headlights – Jet wash (standard in combination with HID Adaptive Lighting with dynamic curve light headlights)	□	□	□
Headlights – HID Adaptive Lighting with dynamic curve light, with automatic height levelling and jet wash (includes dedicated LED day running lights, static cornering lights, and variable dimming of instrument cluster)	○	○/□	○/□
Parking distance sensors – Rear	○/□	○/□	○/□
Tailgate wash/wipe (not available on 4-door)	●	●	●
Wipers – Standard with 6-speed interval settings	●	●	●
Wipers – Automatic, with rain sensor (includes automatic headlights, auto-dimming rear-view mirror, headlight courtesy delay	○/□	○/□	○/□
Quickclear heated windscreen, with heated windscreen washer jets	○/□	●	●

Front and rear door edge protectors.

When the car door is opened, a concealed protective flap instantly moves into position and provides a buffer that protects paint and bodywork.



Exterior features

	Focus Style	Focus Zetec	Focus Titanium
Option packs			
Driver Alert Pack – Active City Stop, Blind Spot Information System with Cross Traffic Alert, Lane Keeping System (including Lane Keeping Alert, Lane Keeping Aid, Auto High Beam, Driver Alert and Traffic Sign Recognition), and electric/heated and power-foldable door mirrors	○	○	○
City Pack – Active City Stop, Active Park Assist including perpendicular park assist and park-out assist, and electric/heated power-foldable door mirrors	○	○	○
Global Closure Pack– Power child locks, rear seat BeltMinder™, electrically-operated front and rear windows with one-touch lowering/closing and, on Style and Zetec, second remote flip key	○	○	○
Light Pack – HID Adaptive Lighting with dynamic curve light headlights (includes dedicated LED day running lights), LED rear lights (not on 4-door) and multi-colour ambient lighting	–	○	○
Seat Pack – Passenger's 4-way seat adjustment and driver and passenger's seat manual lumbar support adjustment	○	○	○
Winter Pack – Heated windscreen, heated front seats, heated steering wheel and (if not already specified) leather-trimmed steering wheel	○	○	○

● = Standard, ○ = Optional, at extra cost, □ = Part of an option pack at extra cost. *The wheel you choose will be fitted with the tyre size noted, but no choice of tyre brand is available. **Ford Emergency Assistance operates in over 30 European countries. This feature works when paired with a compatible connected mobile phone that is with you when an airbag is deployed (excludes knee airbags) or a sensor that registers a crash and deactivates the fuel pump. Text function and Emergency Assistance not supported by all European languages. Compatible mobile phone required. See your local Ford website for latest information. Note: the 18" wheels and tyres available on Ford Focus are designed to deliver more sporting driving characteristics and a firmer ride quality compared to standard 16 and 17" wheels. All 18" wheels require steering rack limiter (plant and dealer fit).

Demist in seconds

Quickclear heated windscreen

Push a button and a heated element built into the windscreen clears the glass in seconds. It will also defrost an icy windscreen reducing the need for ice scrapers.



Exterior styling

Bodystyling kit for 5-door and wagon

Add even more appeal to your Focus with the bodystyling kit that includes: upper and lower grilles in high gloss black honeycomb design with fog light bezels, upper grille with chrome surround, body colour lower centre aerofoil and bumper corners, body colour ST design side skirts, body colour lower rear bumper with integral diffuser and high-gloss black mesh inserts (5-door), body colour rear skirts with lower diffuser and vertical fins in high-gloss black (wagon), large body colour rear spoiler, front and rear brake calipers in red.



Interior features

	Focus Style	Focus Zetec	Focus Titanium
Interior design features			
Door lever – Chrome finish	●	●	●
Floor mats – Front and rear velour carpet mats	–	–	●
Floor mats – Front and rear velour carpet mats with aluminiul look 'FOCUS' logo	○	○	○
Gearshift knob – Leather-trimmed	●	●	●
Scuff plates – Front, aluminiul finish with 'Ford' logo	–	–	●
Scuff plates – Front, polished stainless steel scuff plates with etched 'FOCUS' logo (only available for manual transmission)	–	–	□
Steering wheel – 3-spoke	–	–	–
Steering wheel – 3-spoke, leather-trimmed	●	●	●
Steering wheel – Heated	○/□	○/□	○/□
Steering wheel – Automatic paddle shifters (automatic transmission only)	○	○	○
Steering column – Rake- and reach-adjustable	●	●	●

● = Standard, ○ = Optional, at extra cost, □ = Part of an option pack, at extra cost. *Ford Emergency Assistance operates in over 30 European countries. This feature works when paired with a compatible connected mobile phone that is withyou when an airbag is deployed (excludes knee airbags) or a sensor that registers a crash and deactivates the fuel pump. Text function and Emergency Assistance not supported by all European languages. Compatible mobile phone required. See your local Ford website for latest information.

Fast changes

Ford PowerShift

Ford PowerShift 6-speed automatic transmission cleverly selects the next appropriate gear at exactly the right moment, delivering lightning-fast gear changes with no disruption to the flow of power.



Interior features

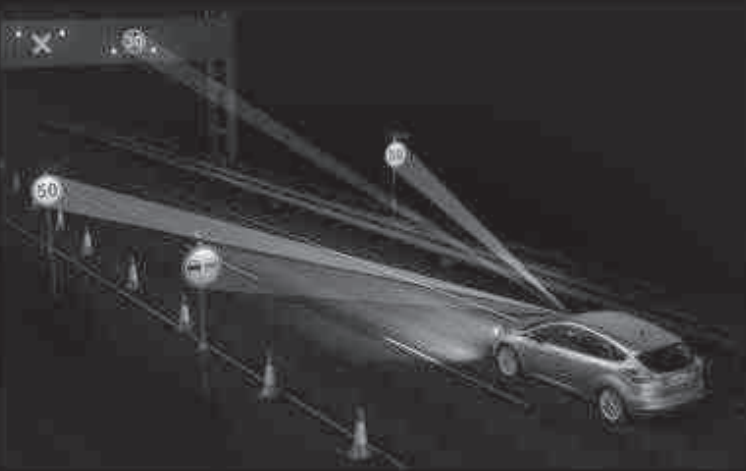
	Focus Style	Focus Zetec	Focus Titanium
Audio and communication systems			
Radio/CD – 4.2" colour display – extended integrated control panel, SYNC with Voice Control and AppLink (includes Emergency Assistance*), 6 speakers, USB connectivity port with iPod® functionality, external AUX connection for external music devices, remote audio controls	●	●	●
Radio/CD/SD with DAB, 8" TFT Touchscreen display, mini electronic finish integrated control panel (EFP), SYNC 2 with Voice Control and Touchscreen (includes Emergency Assistance*), Bluetooth® and Voice Control and audible text messaging, USB and Privacy Mode, external AUX connection for external music devices, remote audio controls, 6 speakers, SD memory card slot for data (e.g. music) exchange	○	○	○
Radio/CD/SD with DAB, 8" TFT Touchscreen display, mini electronic finish integrated control panel (EFP), SYNC 2 with Voice Control and Touchscreen*, Bluetooth® and Voice Control and audible text messaging, USB and Privacy Mode, external AUX connection for external music devices, remote audio controls, 9 Sony-branded speakers, SD memory card slot for data (e.g. music) exchange	○	○	○
Radio/CD/SD-navigation system with DAB, 8" TFT Touchscreen display, mini electronic finish integrated control panel (EFP), SYNC 2 with Voice Control and Touchscreen (includes Emergency Assistance*), 3D navigation, Bluetooth® and Voice Control and audible text messaging, USB and Privacy Mode, external AUX connection for external music devices, remote audio controls, 6 speakers, SD memory card slot for data (e.g. music) exchange; navigation data on SD card (includes cluster level 3)	○	○	○
Premium Sound System – Ten premium Sony-branded speakers (includes centre speaker and subwoofer)	–	○	○
Climate control			
Air conditioning – Manual control	●	●	–
Air conditioning – Dual-zone Electronic Automatic Temperature Control (DEATC)	○/□	○/□	●
● = Standard, ○ = Optional, at extra cost, □ = Part of an option pack, at extra cost. *Ford Emergency Assistance operates in over 30 European countries. This feature works when paired with a compatible connected mobile phone that is withyou when an airbag is deployed (excludes knee airbags) or a sensor that registers a crash and deactivates the fuel pump. Text function and Emergency Assistance not supported by all European languages. Compatible mobile phone required. See your local Ford website for latest information.			

Ford SYNC with AppLink* lets you play music, make and receive hands-free calls and even control apps on your smartphone – all with simple voice commands. And the **Ford Emergency Assistance*** feature is designed to assist occupants to place an emergency call and provide the emergency services with vehicle location information in their own language. (Option on base model. Standard from Style)

*Compatible mobile phone required. You can browse a list of AppLink-compatible apps from your regional Ford website, or via the **Ford App Catalog** available in iOS and Android stores. SYNC AppLink and Emergency Assistance are not supported by all European languages.

Traffic Sign Recognition

The front camera is designed to automatically read standard format road-speed and traffic signs, and display them in the instrument cluster. It acts as a reminder of current road restrictions, and is automatically updated when a new limit comes into view. The signs can be either alongside the road as permanent or temporary signs or above it as overhead gantries. If there are two speed limits in force – such as dry and wet weather limits – these are both displayed in the instrument cluster.



The instrument cluster displays the current speed and warning sign.



Satellite Navigation

Traffic Sign Recognition is enhanced in the new Focus by using a combination of the front camera and the optional Satellite Navigation database. The front camera system is always required; when the customer chooses optional Sat Nav this functionality is added to the system. It allows the Traffic Sign Recognition System to not only identify construction zones and variable speed signs (such as those found on motorways), but also detect urban areas and show standard urban speeds. Roads through areas without adequate signage can also be identified by the Sat Nav and the appropriate speed is shown in cluster.



Interior features

	Focus Style	Focus Zetec	Focus Titanium
Interior convenience features			
Ford Power Starter Button	-	-	●
Cruise control (includes Speed Limiter)	○	○	●
Adaptive Cruise Control (includes Distance Alert and Distance Indication)	-	-	○
Cigar lighter (in lieu of 12 V power point)	○	○	○
Centre console – Regular, with open stowage bins, additional 12 V power point	●	-	-
Centre console – Mid with armrest, open stowage bins, CD storage, additional 12 V front and rear power points	○ / □	●	-
Centre console – Premium with sliding armrest, covered stowage bins, CD storage, additional 12 V front and rear power points	-	○	●
Courtesy light – For front and rear passengers, overhead halogen light, in load compartment	●	●	-
Courtesy light – LED lights for front and rear passengers, overhead light, in load compartment	-	-	●
Courtesy light – Ambient LED courtesy lighting (multi-colour), footwell area, inner door levers, door map pockets, front and rear map-reading lights	-	○ / □	○ / □
MyKey®	●	●	●
Rear-view mirror – Auto-dimming	□	□	□
Rear-view parking camera	○	○	○
Sunroof – Electric tilt/slide (includes overhead console)	○	○	○
Trip/fuel computer	●	●	●
Windows – Electrically-operated front with one-touch lowering/closing on driver's side	●	●	-
Windows – Electrically-operated front and rear with one-touch lowering/closing on driver's side, global closing	○ / □	○ / □	●

Ambient lighting:

- Door opener
- Map pocket
- Submarine
- Footwell

Multi-colour ambient lighting is standard on Titanium with a choice of seven colours. Orange ambient lighting is standard on Titanium.



Interior features

	Focus Style	Focus Zetec	Focus Titanium
Seats			
Front seats – Comfort-style	●	-	-
Front seats – Sports-style	-	●	●
Front seat – Driver's manual lumbar support adjustment	○ / □	○ / □	●
Front seat – Driver's manual height and fore/aft adjustment	●	●	●
Front seat – Driver's power height and fore/aft adjustment	○	○	○ / □
Front seat – Passenger's manual lumbar support adjustment	□	□	□
Front seat – Passenger's manual fore/aft adjustment	●	●	●
Front seat – Passenger's manual height and fore/aft adjustment	□	□	□
Front seats – Heated cushion and seatback	○ / □	○ / □	○ / □
Seats – Partial leather-trimmed Charcoal Black sport-style front seats (requires power driver seat, driver/passenger heated seats and power front windows)	-	○	○
Seats – Leather-trimmed Charcoal Black sport-style front seats (requires rear armrest, power driver seat, driver/passenger heated seats and power front windows)	-	-	○
Rear seat – 60:40 split back and cushion	●	●	●
Rear seat – Recaro-style 60:40 'sculpted' split back and cushion with two height-adjustable head restraints	-	-	-
Rear seat – Folding centre armrest, with two integrated cup holders	-	-	●
Loadspace			
Auxiliary power socket (Estate only)	●	●	●
Load retention net, retractable for fitment behind rear seat (Estate only)	○	○	○
Luggage compartment mat, reversible and foldable (not available on 4-door)	○	○	○
Easy-stow tonneau cover (Estate only)	●	●	●

● = Standard, ○ = Optional, at extra cost, □ = Part of an option pack, at extra cost. *Ford Emergency Assistance operates in over 30 European countries. This feature works when paired with a compatible connected mobile phone that is withyou when an airbag is deployed (excludes knee airbags) or a sensor that registers a crash and deactivates the fuel pump. Text function and Emergency Assistance not supported by all European languages. Compatible mobile phone required. See your local Ford website for latest information.

New centre console storage

This handy new feature has a sliding cover containing a storage space with a removable trinket tray, 12-volt power point, AUX and USB connectivity for SYNC 1 and 2. (Description is for Titanium. Feature may differ in other series.)

Cupholder

The new cupholder has adjustable sliders to grip cups. It can also be used as storage when sliders are in forward or rear position, and the movable floor allows it to hold a 1-litre bottle. (Description is for Titanium. Feature may differ in other series.)



Mechanical features

	Focus Style	Focus Zetec	Focus Titanium
Steering			
Electric power-assisted steering (EPAS) (all other engines)	●	●	●
Suspension			
Front – Independent with MacPherson struts and anti-roll bar, rear – Independent Control Blade multi-link system and anti-roll bar	●	–	●
Suspension – Sports	–	●	–
Technology			
Ford Eco Mode driver information system	●	●	●

● = Standard, ○ = Optional, at extra cost



Safety

	Focus Style	Focus Zetec	Focus Titanium
Safety and driver assistance			
Intelligent Protection System (IPS) ¹⁾	●	●	●
Anti-lock Braking System (ABS) ¹⁾ with Electronic Brake-Force Distribution (EBD) ¹⁾	●	●	●
Electronic Stability Control ¹⁾ with Traction Control ¹⁾ and Emergency Brake Assist (EBA) ¹⁾	●	●	●
Enhanced Electronic Stability Control (ESC) ¹⁾ with Traction Control ¹⁾ , Emergency Brake Assist (EBA) ¹⁾ , Hill Start Assist (HSA) ²⁾ and Trailer Sway Control ¹⁾	○	○	○
Hill Start Assist ²⁾	●	●	●
Emergency Brake Warning ²⁾ – Automatic flashing of brake lights under heavy braking	●	●	●
Airbags – Driver and front passenger's ^{3*)} (single stage)	●	●	●
Airbags – Front side impact ¹⁾	●	●	●
Airbags – Front and rear side curtain ¹⁾	●	●	●
Active City Stop ¹⁾	○/□	○/□	○/□

● = Standard, ○ = Optional, at extra cost, □ = Part of an option pack, at extra cost, ¹⁾Safety feature, ²⁾Driver assistance feature.
***Note: A child seat should never be placed in the front passenger seat when the Ford vehicle is equipped with an operational front passenger's airbag. The safest place for children is properly restrained on the rear seat.**

Intelligent Protection System

Awarded the NCAP 5-star rating, Ford Focus's advanced Intelligent Protection System (IPS) uses a range of sophisticated technologies that are designed to help keep you protected, including an ultra-high strength steel safety cage, an anti-lock braking system with electronic brake-force distribution, and front and curtain airbags.

The Ford Focus IPS includes:

- Driver's and front passenger's airbags♦*
- Driver's and front passenger's side impact airbags
- Side curtain airbags for front and rear seats
- Collapsible steering column and pedals for optimised protection of driver's legs and feet
- Robust computer-optimised body structure with ultra-rigid safety cell and crumple zones
- Pre-tensioners, load-limiting retractors and height-adjustable mounts on front seat belts
- Anti-submarining seat bases
- Anti-lock brakes (ABS) with electronic brake-force distribution (EBD) and Emergency Brake Assist (EBA) and Hill Start Assist
- Emergency Brake Warning
- Torque Vectoring Control
- i-size with ISOFIX compatible with outer rear seats

*Front passenger's airbag deactivation is available as a Dealer fitted option.
♦A rear-facing child seat should never be placed in the front passenger seat when the Ford vehicle is equipped with an operational front passenger's airbag. The safest place for children is properly restrained on the rear seat.



360° protection

The new Focus uses sensors to monitor the road all around you.

1. Adaptive Cruise Control

Helps maintain a preset gap between your Ford Focus and the vehicle ahead. If the vehicle in front slows down, the system decelerates. When the gap widens, your Ford Focus returns to the desired speed.

2. Active City Stop

Designed to sense potential low-speed collisions and apply the brakes if you don't react in time.

3. Pre-Collision Assist

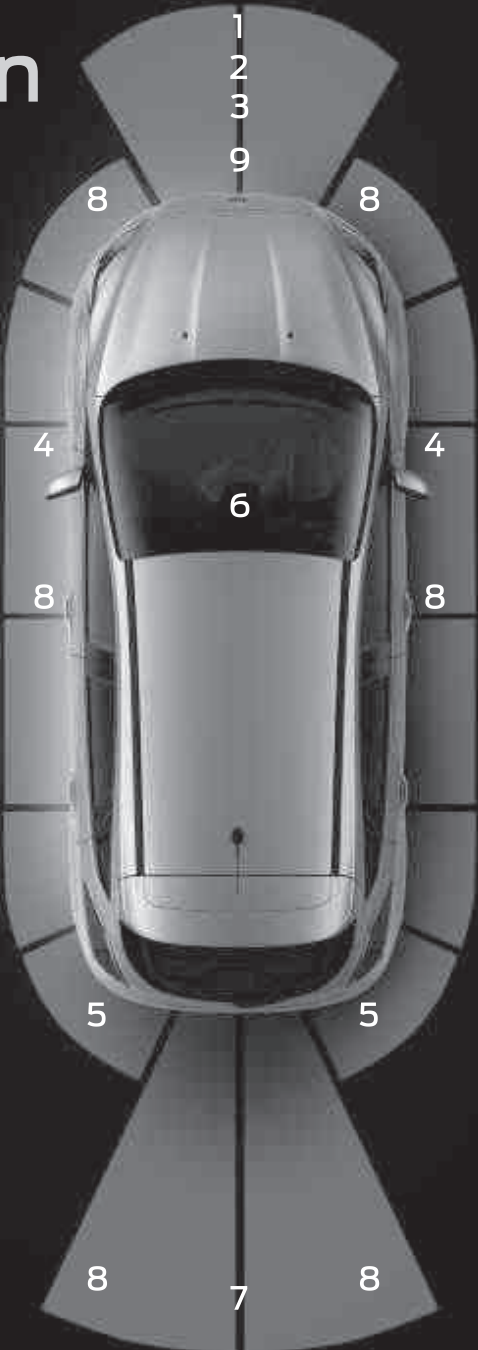
Active at all speeds, Pre-Collision Assist is designed to help you when it detects an imminent impact with a vehicle ahead. First it gives you a visual and audible warning, then, if required, applies the brakes.

4. Blind Spot Information System

As another vehicle - car, van or lorry - enters your blind spot, the system alerts you with a discreet warning light built into the driver's and passenger's door mirrors.

5. Cross Traffic Alert

As you pull out from a perpendicular space, Cross Traffic Alert scans left and right. If a vehicle or other hazard is detected, a visual and audible alert gives a warning.



6. Lane Keeping Alert and Lane Keeping Aid

There are two key features of the Ford Lane-Keeping System. **Lane-Keeping Alert** is designed to help the driver keep the vehicle within its driven lane. Steering wheel feedback alerts you if an unintended lane departure is likely to happen. **Lane-Keeping Aid** applies a steering torque back towards that lane, in the event of an unintended lane departure. Lane-Keeping System is available at speeds over 65 km/h on highways and interurban roads with visible markings, and can be overridden by the driver or the turn indicator at any time.

7. Rear-view camera

Select reverse gear and the rear-view camera comes on automatically in the navigation display, allowing you to see objects behind your car. For safer and easier manoeuvring, special guidance graphics indicate the width and centre line of the car.

8. Active Park Assist®

Steers you into parallel or perpendicular parking spaces. Simply push a button and the sensors locate a suitable space as you drive past. Then it automatically steers you in, while all you do is operate the accelerator, brake and gears (following on-screen instructions and audible signals) (Option, also available as part of Business Pack 2, Easy Driver Plus Pack and Parking Pack 2)

9. Distance Alert®

An audible warning helps you judge the distance between your vehicle and obstacles at the front and rear. (Option)

Safety equipment

	Focus Style	Focus Zetec	Focus Titanium
Fixing provisions behind 1st row for load partition system (available for Estate only, load partition systems for 1st and 2nd row not interchangeable, load partition mesh metal type accessory only)	○	○	○
Tyre Pressure Monitoring ¹⁾	●	●	●
Lane Keeping Alert ²⁾ (including Lane Keeping Aid ²⁾ , Auto High Beam ¹⁾ , Driver Alert ²⁾ and Traffic Sign Recognition ²⁾	○/□	○/□	○/□
Seats – ISOFIX mounting provision for child seat ¹⁾	●	●	●
Security			
Remote central locking	●	●	●
Remote central/double locking	○	○	○
Perimeter and volume-sensing alarm (requires remote central/double locking)	○	○	○
Thatcham Category 1 perimeter and volume-sensing alarm (requires remote central/double locking)	○	○	○
Ford KeyFree System with Ford Power Starter Button (includes power-foldable door mirrors and 2 remote keys) (fully keyless vehicle)	–	–	○/□

● = Standard, ○ = Optional, at extra cost, □ = Part of an option pack, at extra cost, ¹⁾Safety feature, ²⁾Driver assistance feature.

Distance alert

A radar hidden behind the grille determines the distance and time to the vehicle in front. A series of coloured alerts represents the time to the vehicle in front.



¹⁾Uses sensors.

²⁾Designed to operate at speeds below 30 km/h.

Fuel, performance and emissions

Technical Data	Euro Stage	Transmission	Maximum Power PS (kW)	Torque Nm	CO ₂ emissions (g/km) ^{**}	Fuel consumption in L/100 km ^{**}			Performance ^a		
						Urban	Extra Urban	Combined	Max. speed (km/h)	0-100 km/h (secs)	50-100 km/h* (secs)
4-door											
1.0 EcoBoost (100 PS (74 kW)) (with Auto-Start-Stop)	Stage VI	M5	100 (74)	170	109	5.9	4.2	4.8	187	12.6	12.9
1.0 EcoBoost (125 PS (92 kW)) (with Auto-Start-Stop)	Stage VI	M6	125 (92)	170	110	5.8	4.2	4.8	195	11.1	11.9
1.5 Duratorq TDCi (95 PS (70 kW)) (with Auto-Start-Stop)	Stage VI + DPF	M6	95 (70)	250	98	4.3	3.4	3.8	182	12.1	10.5
1.5 Duratorq TDCi (120 PS (85 kW)) (with Auto-Start-Stop)	Stage VI + DPF	M6	120 (88)	270	98	4.3	3.4	3.8	195	10.6	9.3
1.5 Duratorq TDCi (120PS (85 kW)) (with Auto-Start-Stop)	Stage VI + DPF	MPS6 (Powershift)	120 (88)	270	109	4.7	3.9	4.2	193	10.9	n/a
2.0 Duratorq TDCi (150 PS (110 kW)) (with Auto-Start-Stop)	Stage VI + DPF	MPS6 (PowerShift)	150 (110)	370	115	5.2	4.0	4.4	210	8.8	n/a

Same power with more fuel efficiency and lower emissions

New EConetic engine

Available from Spring 2015, the new EConetic TDCi diesel engine will provide an exceptional balance of power and economy.



Fuel, performance and emissions

Technical Data	Euro Stage	Transmission	Maximum Power PS (kW)	Torque Nm	CO ₂ emissions (g/km) ^{**}	Fuel consumption in L/100 km ^{**}			Performance ^a		
						Urban	Extra Urban	Combined	Max. speed (km/h)	0-100 km/h (secs)	50-100 km/h* (secs)
5-door											
1.0 EcoBoost (100 PS (74 kW)) (with Auto-Start-Stop)	Stage VI	M5	100 (74)	170	105	5.7	3.9	4.6	185	12.5	12.8
1.0 EcoBoost (125 PS (92 kW)) (with Auto-Start-Stop)	Stage VI	M6	125 (92)	170	108	5.7	4.1	4.7	193	11.0	11.8
1.5 Duratorq TDCi (95 PS (70 kW)) (with Auto-Start-Stop)	Stage VI + DPF	M6	95 (70)	250	98	4.3	3.4	3.8	180	12.0	10.4
1.5 Duratorq TDCi (120 PS (85 kW)) (with Auto-Start-Stop)	Stage VI + DPF	M6	120 (88)	270	98	4.3	3.4	3.8	193	10.5	9.2
1.5 Duratorq TDCi (120 PS (85 kW)) (with Auto-Start-Stop)	Stage VI + DPF	MPS6 (PowerShift)	120 (88)	270	109	4.7	3.9	4.2	191	10.8	n/a
2.0 Duratorq TDCi (150 PS (110 kW)) (with Auto-Start-Stop)	Stage VI + DPF	MPS6 (PowerShift)	150 (110)	370	115	4.7	3.7	4.0	210	8.8	n/a

*In 4th gear. ^aFord test figures. ^{**}The declared Fuel Consumptions and CO₂ emissions are measured according to the technical requirements and specifications of the European Regulations (EC) 715/2007 and (EC) 692/2008 as last amended. Fuel consumption and CO₂ emissions are specified for a vehicle variant and not for a single car. The applied standard test procedure enables to compare between different vehicle types and different manufacturers. In addition to the fuel efficiency of a car, driving behaviour as well as other non-technical factors play a role in determining a car's fuel consumption and CO₂ emissions. CO₂ is the main greenhouse gas responsible for global warming. A guide on fuel economy and CO₂ emissions which contain data for all new passenger car models is available at any point of sale free of charge or can be downloaded under www.simi.ie. For further information see www.seai.ie. **DPF** = Diesel Particulate Filter. All petrol engines are equipped with a catalytic converter.

10% reduction in fuel consumption

When your Ford Focus is idling at a standstill, Auto-Start-Stop automatically shuts down the engine to save fuel. When you want to drive off, the engine immediately restarts. The system can reduce fuel consumption by up to 5% in mixed driving conditions and 10% in an urban environment.

Fuel, performance and emissions

Technical Data	Euro Stage	Transmission	Maximum Power PS (kW)	Torque Nm	CO ₂ emissions (g/km) ^{ac}	Fuel consumption in L/100 km ^{ac}			Performance ^a		
						Urban	Extra Urban	Combined	Max. speed (km/h)	0-100 km/h (secs)	50-100 km/h* (secs)
5-door wagon											
1.0 EcoBoost (100 PS (74 kW)) (with Auto-Start-Stop)	Stage VI	M5	100 (74)	170	109	5.9	4.2	4.8	185	12.7	13.0
1.0 EcoBoost (125 PS (92 kW)) (with Auto-Start-Stop)	Stage VI	M6	125 (92)	170	110	5.8	4.2	4.8	193	11.2	12.0

EcoBoost = more power + better fuel economy

As well as generating more power compared to conventional engines, EcoBoost power units improve fuel efficiency and CO₂ emissions by as much as 20 per cent.



Fuel, performance and emissions

Technical Data	Euro Stage	Transmission	Maximum Power PS (kW)	Torque Nm	CO ₂ emissions (g/km) ^{ac}	Fuel consumption in L/100 km ^{ac}			Performance ^a		
						Urban	Extra Urban	Combined	Max. speed (km/h)	0-100 km/h (secs)	50-100 km/h* (secs)
1.5 Duratorq TDCi (95 PS (70 kW)) (with Auto-Start-Stop)	Stage VI + DPF	M6	95 (70)	250	98	4.3	3.4	3.8	180	12.2	10.6
1.5 Duratorq TDCi (120 PS (85 kW)) (with Auto-Start-Stop)	Stage VI + DPF	M6	120 (88)	270	98	4.3	3.4	3.8	193	10.7	9.4
1.5 Duratorq TDCi (120 PS (85kW)) (with Auto-Start-Stop)	Stage VI + DPF	MPS6 (PowerShift)	120 (88)	270	109	4.7	3.9	4.2	191	11.0	n/a
2.0 Duratorq TDCi (150 PS (110 kW)) (with Auto-Start-Stop)	Stage VI + DPF	MPS6 (PowerShift)	150 (110)	370	115	5.2	4.0	4.4	208	8.9	n/a

^aIn 4th gear. ^aFord test figures. ^{ac}The declared Fuel Consumptions and CO₂ emissions are measured according to the technical requirements and specifications of the European Regulations (EC) 715/2007 and (EC) 692/2008 as last amended. Fuel consumption and CO₂ emissions are specified for a vehicle variant and not for a single car. The applied standard test procedure enables to compare between different vehicle types and different manufacturers. In addition to the fuel efficiency of a car, driving behaviour as well as other non-technical factors play a role in determining a car's fuel consumption and CO₂ emissions. CO₂ is the main greenhouse gas responsible for global warming. A guide on fuel economy and CO₂ emissions which contain data for all new passenger car models is available at any point of sale free of charge or can be downloaded under www.siml.ie. For further information see www.seai.ie. **DPF** = Diesel Particulate Filter. All petrol engines are equipped with a catalytic converter.

Clever features that save time and hassle

Capless refuelling with Ford Easy-Fuel

No dirty fuel caps to touch. Plus Ford Easy-Fuel with its unique safeguard ensures nobody accidentally fills up with the wrong fuel.



Weights and loads

	Euro Stage	Kerbweight (kg) #	Gross Vehicle Mass (kg)	Gross Train Mass (kg)	Max. Towable Mass (braked) (kg)	Max. Towable Mass (unbraked) (kg)
4-door						
1.0 EcoBoost (100 PS (74 kW)) (with and without Auto-Start-Stop), 5-speed manual	Stage VI	1303	1900	2900	1000	650
1.0 EcoBoost (125 PS (92 kW)) (with Auto-Start-Stop), 6-speed manual	Stage VI	1306	1900	3100	1200	650
1.5 Duratorq TDCi (95 PS (70 kW)) (with Auto-Start-Stop), 6-speed manual	Stage VI + DPF	1345	1900	3100	1200	670
1.5 Duratorq TDCi (120 PS (85 kW)) (with Auto-Start-Stop), 6-speed manual	Stage VI + DPF	1350	1900	3100	1200	675
1.5 Duratorq TDCi (120 PS (85kW)) (with Auto-Start-Stop) PowerShift MPS6	Stage VI + DPF	1358	1900	3100	1200	675
2.0 Duratorq TDCi (150 PS (110 kW)) (with Auto-Start-Stop), PowerShift 6-speed auto	Stage VI + DPF	1462	2050	3550	1500	730
5-door						
1.0 EcoBoost (100 PS (74 kW)) (with Auto-Start-Stop), 5-speed manual	Stage VI	1276	1900	2900	1000	635
1.0 EcoBoost (125 PS (92 kW)) (with Auto-Start-Stop), 6-speed manual	Stage VI	1280	1900	3100	1200	640
1.5 Duratorq TDCi (95 PS (70 kW)) (with Auto-Start-Stop), 6-speed manual	Stage VI + DPF	1338	1900	3100	1200	665
1.5 Duratorq TDCi (120 PS (85 kW)) (with Auto-Start-Stop), 6-speed manual	Stage VI + DPF	1343	1900	3100	1200	670
1.5 Durtakorq TDCi (120 PS (85 kW)) (with Auto-Start-Stop) PowerShift MPS6	Stage VI + DPF	1364	1900	3100	1200	680
2.0 Duratorq TDCi (150 PS (110 kW)) (with Auto-Start-Stop), PowerShift 6-speed auto	Stage VI + DPF	1455	2050	3850	1500	725



Weights and loads

	Euro Stage	Kerbweight (kg) #	Gross Vehicle Mass (kg)	Gross Train Mass (kg)	Max. Towable Mass (braked) (kg)	Max. Towable Mass (unbraked) (kg)
5-door wagon						
1.0 EcoBoost (100 PS (74 kW)) (with Auto-Start-Stop), 5-speed manual	Stage VI	1313	1900	2900	1000	655
1.0 EcoBoost (125 PS (92 kW)) (with Auto-Start-Stop), 6-speed manual	Stage VI	1316	1900	3100	1200	655
1.5 Duratorq TDCi (95 PS (70 kW)) (with Auto-Start-Stop), 6-speed manual	Stage VI + DPF	1362	1900	3100	1200	680
1.5 Duratorq TDCi (120 PS (85 kW)) (with Auto-Start-Stop), 6-speed manual	Stage VI + DPF	1368	1900	3100	1200	690
1.5 Durtorq TDCi (120 PS (85 kW)) (with Auto-Start-Stop) Powershift MPS6	Stage VI + DPF	1388	1900	3100	1200	690
2.0 Duratorq TDCi (150 PS (110 kW)) (with Auto-Start-Stop), PowerShift 6-speed auto	Stage VI + DPF	1471	2050	3850	1800	735

*Represents the lightest kerbweight assuming driver at 75kg, full fluid levels and 90% fuel levels, subject to manufacturing tolerances and options, etc., fitted. **Towing limits** quoted represent the maximum towing ability of the vehicle at its Gross Vehicle Mass to restart on a 12 per cent gradient at sea level. The performance and economy of all models will be reduced when used for towing. **Nose weight limit** is a maximum of 75kg on all models. **Gross Train Mass** includes trailer weight.

Rear bumper protection

The stainless steel design plate combines protection against daily wear with a stylish appearance. (Accessory)

Crossbars

Designed to perfectly fit your Ford Focus, lockable crossbars are the platform for all roof transportation accessories. (Option and accessory)

Mudflaps

Contoured mudflaps help to keep your Ford Focus clean by reducing road spray. Available as sets for front and rear. (Option and accessory)

Detachable tow bar

For extra transport capability. (Option and accessory)

For more accessories for your Focus visit www.ford-accessories.ie.
For a range of Ford branded items – from clothing to lifestyle products and model cars – visit www.fordlifestylecollection.com.

Colours and trims

Model	Focus Style	Focus Zetec	Focus Titanium	Focus Titanium
Seat facing trim and colour	Twist in Dark Charcoal Black	View in Charcoal Black	Groove/Lux in Charcoal Black	Capretto/Groove in Charcoal Black ⁽¹⁾
Seat bolster trim and colour	Freedom in Charcoal Black	Boost in Charcoal Black	Lux in Charcoal Black	Capretto/Lux in Charcoal Black ⁽²⁾
Instrument panel colour: Upper	Charcoal Black	Charcoal Black	Charcoal Black	Charcoal Black
Instrument panel colour: Lower	Charcoal Black	Charcoal Black	Charcoal Black	Charcoal Black
Solid body colours				
Frozen White*	●	●	●	●
Blazer Blue	●	●	●	●
Race Red	●	●	●	●
Metallic & Fashion Metallic body colours*				
Shadow Black	●	●	●	●
Deep Impact Blue	●	●	●	●
Moondust Silver	●	●	●	●
Magnetic	●	●	●	●
Brisbane Brown	●	●	●	●
Caribou	●	●	●	●
Tectonic Silver	●	●	●	●
Special metallic body colour*				
Candy Red	●	●	●	●

● = Available, * = Option at extra cost, – = Not available.¹Charcoal Black sport-style front seats (V-shape) with 3-D-effect fabric "Groove" inserts; premium leather-trimmed backrest, cushion and inner bolsters; vinyl-trimmed side facings, headrests, 1st row backrest, front centre armrest and door panels.²Leather-trimmed Charcoal Black sport-style front seats (V-shape) with premium embossed 3-D-effect leather "Basket Weave" trimmed backrest, cushion inserts and inner bolsters; premium "Capretto" leather on backrest, cushion, upper bolster, rear centre armrest; vinyl-trimmed side facings, headrests, front centre armrest, 1st row backrest and corresponding door panels.
*Frozen White solid body colour, metallic body colours, partial leather trim, and leather trim are options at extra cost.

Dimensions

	4-door	5-door	5-door Estate
Overall length (mm)	4538	4360	4560
Overall width with/without mirrors (mm)	2010/1823	2010/1823	2010/1823
Overall width with folded-back mirrors (mm)	1858	1858	1858
Overall height without/with roof rails (unladen) (mm)	1469/n/a	1469/n/a	1492/1492
Minimum distance between wheel arches (in luggage compartment)	1026	1029	1149
Turning circle – kerb to kerb (m)	10.4	10.4	10.4
Luggage capacity (litres) [†]			
5-seat mode (laden to package tray) (with tyre repair kit)	475	363	490
5-seat mode (laden to package tray) (with mini spare)	421	316	476
5-seat mode (laden to package tray) (with full-size spare)	372	277	n/a
2-seat mode (laden to roof) (with tyre repair kit)	n/a	1262	1516
2-seat mode (laden to roof) (with mini spare)	n/a	1215	1502
2-seat mode (laden to roof) (with full-size spare)	n/a	1176	n/a
Fuel tank capacity (litres)			
Petrol	55	55	55
Diesel	53/60*	53/60*	53/60*

[†]Measured in accordance with ISO 3832. Dimensions may vary dependent on the model and equipment fitted. *60 litres for 2.0 Duratorq TDCi engines.

4-door



5-door



Wagon



A feel for comfort.

The look and feel of interior materials plays a large part in appreciating the overall driving experience. That's why great care has been taken in designing and crafting the trims for the new Focus.

Titanium

Basket Weave/Capretto in Charcoal Black.

Available as an option at extra cost.



Tailored to suit.

Our full range of high-quality seat and door trims lets you build the perfect interior environment to reflect the spirited driving dynamics of your Ford Focus.



1. Studio/Edge
Twist in Dark Charcoal Black



2. Trend
Twist in Medium Light Stone



3. Trend Sport
View in Charcoal Black (without red stitching)



4. Trend Sport
View in Charcoal Black (with red stitching)



5. Titanium/Titanium X
Groove/Lux in Charcoal Black



6. Trend Sport and Titanium
Capretto/Groove (partial leather) in Charcoal Black*



7. Titanium/Titanium X
Basket Weave/Capretto (full leather) in Charcoal Black*

* Option at extra cost.

More of what you want.

With a full range of wheel options, you can tailor your Focus to perfectly match your preferred style.



16" 11-spoke 'Aero' wheel cover (D5AA5)



16" 10x2-spoke alloy wheel
(MFC: D2XB5, FINIS: 1702125)



17" 5x2-spoke alloy wheel
(MFC: D2YLX, FINIS: 1877177)



17" 5x2-spoke alloy wheel
(MFC: D2YBV, FINIS: 1710606)



17" 5x2-spoke alloy wheel
(MFC: D2YDK, FINIS: 1765425)



17" 10x2-spoke, alloy wheel
(D2YLW, FINIS: 1877176)



16" 5-spoke 'Design' wheel (D5AA1)



16" 5-spoke alloy wheel
(MFC: D2XFL, FINIS: 1842559) (Easy To Clean)



16" 5-spoke Y-design alloy wheel
(MFC: D2XD1, FINIS: 1715455) (Mini ST)



16" 5x2-spoke alloy wheel
(MFC: D2XE4, FINIS: 1892726)
(215/55 tyre, so 2.0 TDCi engine)



16" 5x2-spoke alloy wheel
(MFC: D2XBT, FINIS: 1715341)



17" 10x2-spoke alloy wheel
(MFC: D2YCR, FINIS: 1719524)



17" 15-spoke alloy wheel
(MFC: D2YB7, FINIS: 1892727)



17" 15-spoke alloy wheel
(MFC: D2YL5, FINIS: 1719527)



18" 5-spoke alloy wheel
(MFC: D2UD5, FINIS: 1719526)



18" 5-spoke Y-design alloy wheel
(MFC: D2UBJ, FINIS: 1892939)



16" 5x2-spoke alloy wheel
(MFC: D2XB8, FINIS: 1809670)
(Arctic Grey painted/machined)



16" 5x3-spoke alloy wheel
(MFC: D2XD6, FINIS: 1715342)



16" 7x2-spoke alloy wheel
(MFC: D2XAZ, FINIS: 1710604)



16" 10-spoke alloy wheel
(MFC: D2XDC, FINIS: 1892938)



16" 10x2-spoke, Premium luster-nickel alloy wheel
(D2XTU, FINIS: 1877175)
(215/55 tyre, so 2.0 TDCi engine)



18" 7-spoke alloy wheel
(MFC: D2UD4, FINIS: 1835141)



18" 8-spoke Y-design alloy wheel
(MFC: D2UEP, FINIS: 1792929) (Sterling Silver)



18" 8-spoke Y-design alloy wheel
(MFC: D2UEQ, FINIS: 1791531) (Panther Black/machined)



19" 5x2 spoke alloy wheel (D2VBT)



19" 5x2-spoke Shadow Black alloy wheel
(Red calipers) (D2VA6)

Bodystyle:

Series:

Engine:

Transmission:

Colour:

Trim:

Wheels:

Audio:

Options:

Option Packs:

Accessories:

Insurance quote:

Finance:

Ford Protect

You can extend your new vehicle warranty for up to three more years, with the Ford protect plan of your choice. Then you'll benefit from:

- No repair costs for major vehicle parts for up to 5 years
- No nasty surprises – one payment is all you need to make

Insure

Ford Insure's comprehensive motor insurance, created exclusively for Ford owners, offers complete peace of mind. You can contact us on 1850 449 444, Monday to Friday 9am-8pm (excluding Bank Holidays). Why not try us out.

Finance

Deciding how to finance your new car is just as important as choosing it. Before visiting your bank or credit union, speak to your Ford Dealer and see what Ford Credit, the experts in automotive finance, can offer you. Their range of flexible finance packages can help you to get the car you want.

Alternatively, visit

www.ford.ie/FordCredit

Bodyshops

The Ford Authorised Bodyshop Programme was established to provide the very best service for you and your vehicle. A network of body repair specialists, they have the Ford know-how, technology and experience to repair your car to it's pre-accident condition. Because no one knows your Ford like we do, they are the perfect choice for repairing your Ford. And, we are so confident about the quality of our repair that we'll guarantee it for three years.

To look at our range of vehicles, visit us at
www.ford.ie
To look at finance for your Ford visit
www.ford.ie/FordCredit



2-year/unlimited km* Warranty	●
1-year/unlimited km* Ford Assistance Roadside Cover (Europe)	●
5-year* Ford Protect Extended Warranty (optional)	○
2-year/unlimited km* Paint Warranty	●
12-year/unlimited km* Perforation Warranty	●
● = Standard, ○ = Optional, at extra cost*From the date of first registration. Subject to terms and conditions.	

Illustrations, descriptions and specifications. This catalogue was correct at the time of going to print. However, Ford policy is one of continuous product development. The right is reserved to change specifications, colours and prices of the models and items illustrated and described in this publication at any time. For the latest details always consult your Ford Dealer. **Optional equipment.** Throughout this publication, wherever a feature is described as being an 'Option' or 'Option Fitment/Pack' etc, you should assume that it will be at extra cost to the base vehicle, unless specifically stated to the contrary. All models and colour combinations are subject to availability. **Note.** Some images portrayed are of a pre-production model and/or are computer generated, therefore, the design/features on the final version of the vehicle may differ in various respects. In addition, some of the features shown on the vehicles may be optional. **Note.** This brochure contains both original Ford accessories as well as a range of products from our suppliers. ♦The identified accessories are carefully selected third party supplier branded accessories which do not come with a Ford warranty but are instead covered by the third party supplier's own warranty, the details of which can be obtained from your Ford Dealer. **Note.** The Bluetooth® word mark and logos are owned by the Bluetooth SIG, Inc. and any use of such marks by Ford Motor Company is under licence. The iPod word mark and logos are the property of Apple Inc. Other trademarks and trade names are those of their respective owners. **Note.** Some driver assistance features and safety features described in this brochure are designed to function using sensors, whose performance may be affected under certain weather or environmental conditions.



EURO NCAP **advanced**
2011 Reward for Ford Lane Keeping Aid

EURO NCAP **advanced**
2011 Reward for Ford Driver Alert

EURO NCAP **advanced**
2011 Reward for Ford Active City Stop

EURO NCAP **advanced**
2011 Reward for Ford Forward Alert

EURO NCAP **advanced**
2012 Reward for Ford SYNC with Emergency Assistance



Sub 1-litre
Ford 1.0 litre EcoBoost



Published by Henry Ford & Son Ltd, Elm Court, Borrenmanna Road, Cork.
BJN 204253 FoE I53E
PN 572503/1015/8.5m/IRL en
September 2015.
© Ford Motor Company Limited.

